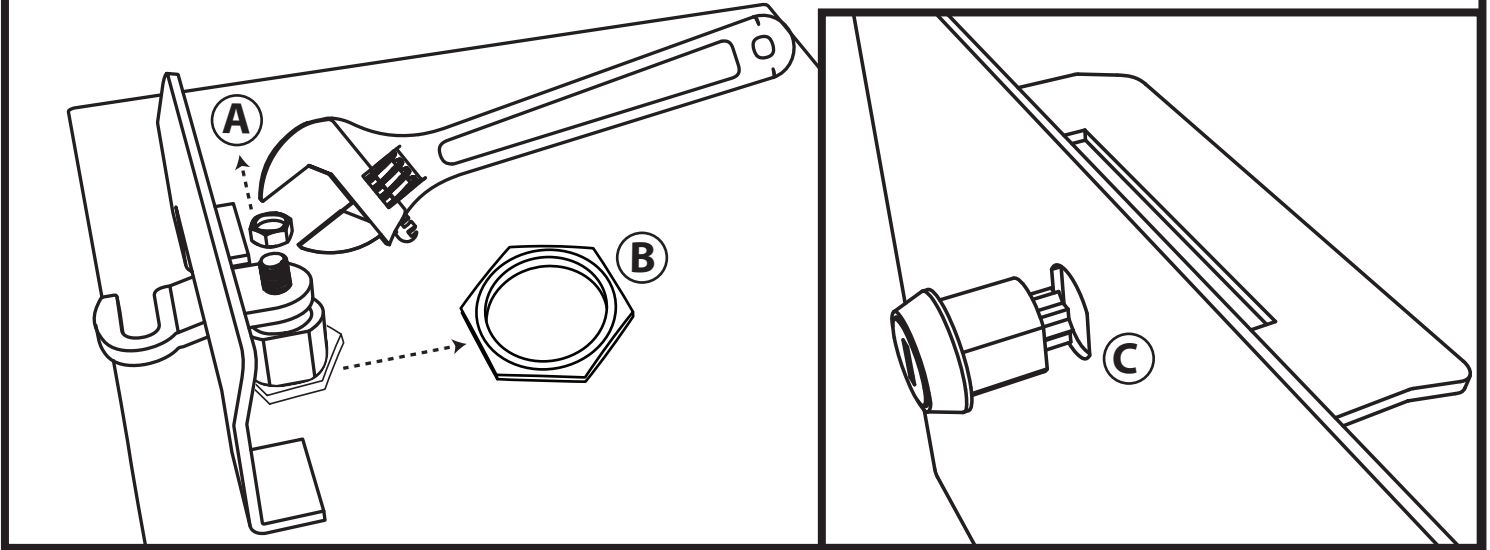


Retro-fit lock replacement for Mail Boss Mailbox

- 1 Remove the old lock by unscrewing the nut on the back of the cam assembly on the inside of the mailbox. **A.** Then unscrew the hex nut that holds the lock case in place **B.** and remove the lock core **C.**

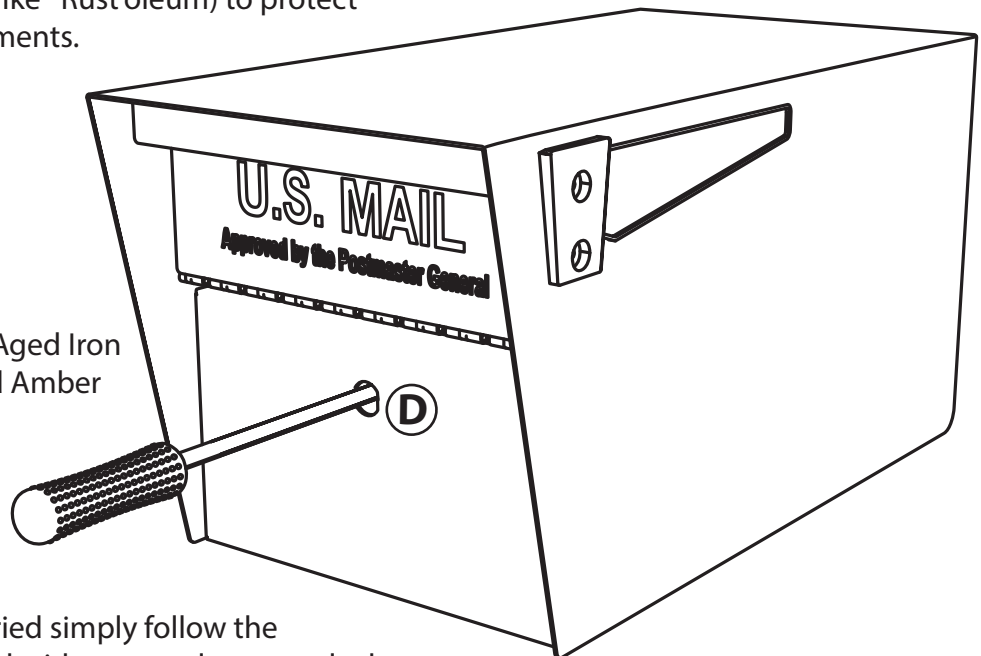


- 2 Once the old lock has been removed use a medium sized round file, and file evenly all the way around the lock hole until the hole is large enough to fit your replacement lock **D.**

When the hole has reached the appropriate size, we suggest that you apply some color matching touch up paint (like *Rust'oleum) to protect the exposed metal from the elements.

Matching Rust'oleum colors:

Black: Hammered in Black
 Granite: Enamel in Smoke Grey
 White: Enamel in Canvas White
 Galaxy: Multi-Color Textured in Aged Iron
 Bronze: Hammered in Burnished Amber



- 3 After your touch-up paint has dried simply follow the installation instructions provided with your replacement lock. If you have any further questions or need any additional assistance, please don't hesitate to reach out.

Have a question?... Need a part ASAP?... 1-800-589-7990

Copyright © 2019 Epoch Design™ All rights reserved