



MAIL BOSSTM

LOCKING SECURITY MAILBOXES



PROTECT YOUR IDENTITY





EPOCH DESIGN, LLC

In 2006, Epoch Design launched the Mail Boss brand of locking mailboxes to offer a secure and affordable solution to mail and identity theft prevention. With an installation-friendly Fast-Trak[®] mounting plate, welded commercial-grade galvanized steel construction, and a patented security locking design, the Mail Boss quickly won over consumers looking to prevent mail and identity theft. Mail Boss mailboxes are now available in retail hardware stores across the nation.

Warranty

Epoch Design stands by the quality of its designs with a Limited Lifetime Warranty on all Mail Boss products and over a decade in manufacturing experience. Strict quality controls and superior materials ensure that every Mail Boss product is quality-built to the highest standards in the industry.

When you choose an Epoch Design product you are getting the ultimate in innovation, security and long-lasting design.

For more information about any of our products,
visit us at **www.mailboss.com**





The unique patented designs of Mail Boss® can be found gracing some of the country's finest homes and have been featured nationally in televised home improvement shows, publications such as Popular Mechanics and Hardware Retailing, and many newspapers including The Seattle Times, and The San Francisco Chronicle among others. Choose from a wide variety of styles, colors, finishes and mounting options to perfectly complement your home or business.

Distinctive style and unsurpassed quality have made Mail Boss an innovative leader in the design and manufacturing of premium security locking mailboxes.

Security

Epoch Design exceeds USPS standards for security and durability. Mail Boss mailboxes feature a patented anti-pry latch locking mechanism and a superior commercial grade tube lock to render the Mail Boss mailboxes the ultimate in mail identity theft prevention. In addition, the Package Master features patented Mail-Shield® technology to prevent fishing.



Quality

All Mail Boss mailboxes and accessories:

- + Constructed of heavy gauge electro-galvanized steel
- + Heavy-duty stainless steel hinges for years of trouble-free operation
- + Individually powder coated for superior durability and rust resistance
- + Includes all necessary hardware making installation quick and easy



For more information about any of our products, visit us at www.mailboss.com



Patented Fast-Trak Mounting Plate

1.
ATTACH



2.
SLIDE



3.
SECURE



Superior Protection



For more information about any of our products,
visit us at www.mailboss.com

Package Master



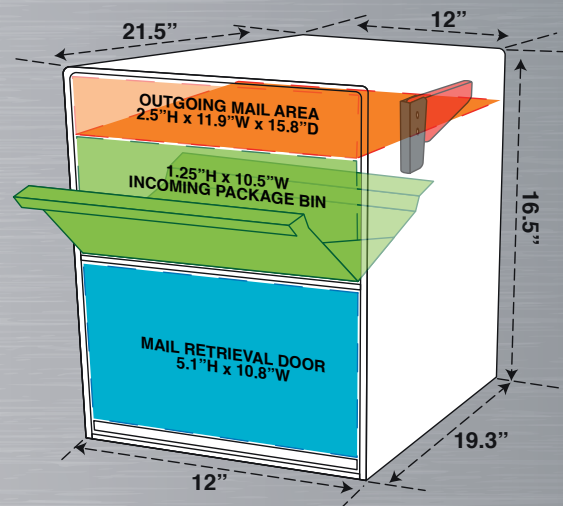
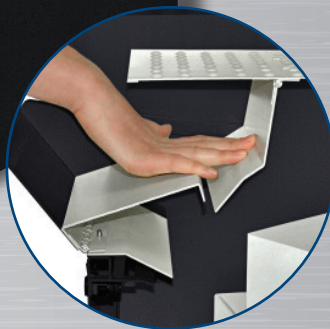
BLACK
-7206

BRONZE
-7208

WHITE
-7207

GRANITE
-7205

53 lbs



The Package Master is the ultimate security package mailbox for receiving small parcels and securely storing weeks of mail.

This USPS Approved extra-large capacity security mailbox features patent-pending "Mail Shield" technology, so unlike with other bin-mailers, your mail and packages are safe from fishing. This box is perfect for those who need to receive small packages such as prescriptions by mail. With the patented Fast-Trak® Mounting Plate, you can quickly and easily install your Package Master on a Mail Boss In-Ground or Surface Mount Post, an existing post or gang plank.



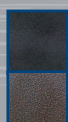
- + U.S. Post Master Approved
- + 12- and 14-gauge electrogalvanized welded steel
- + Patented anti-pry latch locking mechanism
- + Locking access door with commercial grade high security wafer lock
- + Includes vandal resistant flag, 3 keys, reflective house numbers, floor liner & installation hardware
- + Durable powder-coated finish
- + Available in black, granite, white or bronze

Dimensions: 21.5" D x 16.5" H x 12" W
Weight: 53 lbs.

**Wholesale
COST:**

For more information about any of our products,
visit us at www.mailboss.com

Mail Boss



BLACK
-7106

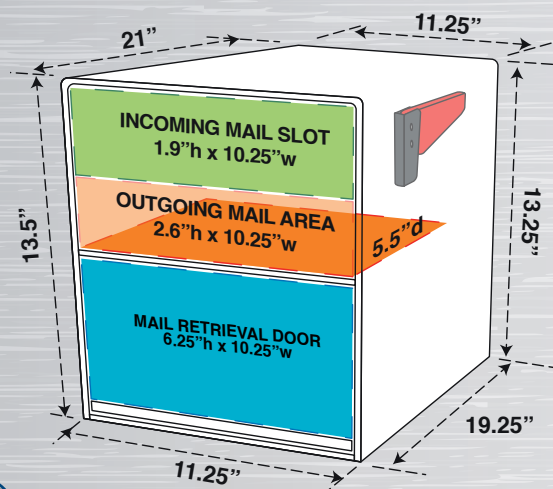
BRONZE
-7108



WHITE
-7107

GRANITE
-7105

40 lbs



**The original Mail Boss
curbside mailbox
– ultimate security
& protection against
mail-ID theft.**

With heavy-gauge galvanized welded steel construction and stainless steel hinges, the USPS Approved Mail Boss is a mail fortress! An exclusive patented anti-pry latch locking mechanism prevents leveraged entry, so unlike other locking mailboxes, the Mail Boss can't be easily pried open by would-be identity thieves. With the patented Fast-Trak® Mounting Plate, you can quickly and easily install your high-security mailbox on an existing post, platform or gang plank.



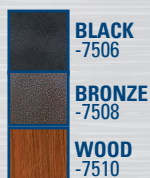
- + U.S. Post Master Approved
- + Full service, large capacity curbside locking security mailbox
- + 12- & 14-Gauge electrogalvanized welded steel
- + Incoming mail slot accepts a box of checks – 1.9" H x 10.25" W
- + Stainless steel hinges for ease of use
- + Includes vandal resistant flag, 3 keys, reflective house numbers & installation hardware
- + Durable powder-coated finish

Dimensions: 21"D x 13.75"H x 11.25"W

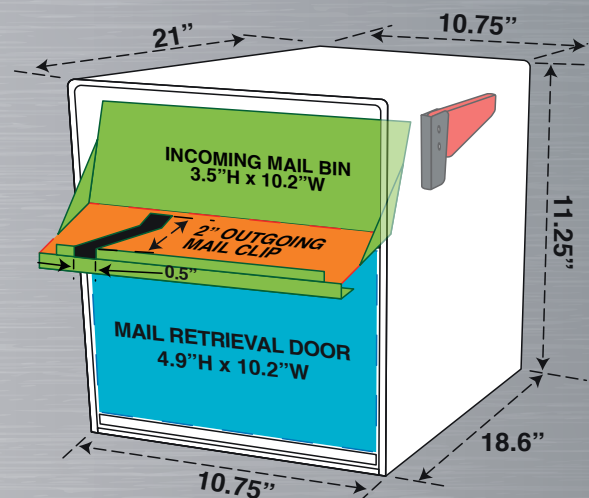
**Wholesale
COST:**

For more information about any of our products,
visit us at www.mailboss.com

Mail Manager



23 lbs
PRO-30 lbs



The best choice for an affordable secure mailbox. Just as tough as the original Mail Boss only a little smaller.

The Mail Manager is made of 14- and 16-gauge galvanized steel, and features the same patented anti-pry latch locking mechanism as its larger counterparts, just in a smaller size. Baffle door design allows for delivery of small packages without compromising mail security.



- + Full service curbside locking security mailbox
- + Innovative baffle door design accepts mail bundles and small packages but prevents fishing
- + Patented anti-pry latch locking mechanism to prevent leveraged entry
- + Includes vandal resistant flag, 3 keys, floor liner & hardware for installation
- + Stainless steel hinges for ease of use
- + Does not include or require Mounting Plate
- + PRO includes Mounting Plate

Dimensions: 21"D x 11.25"H x 10.75"W

**Wholesale
COST:**

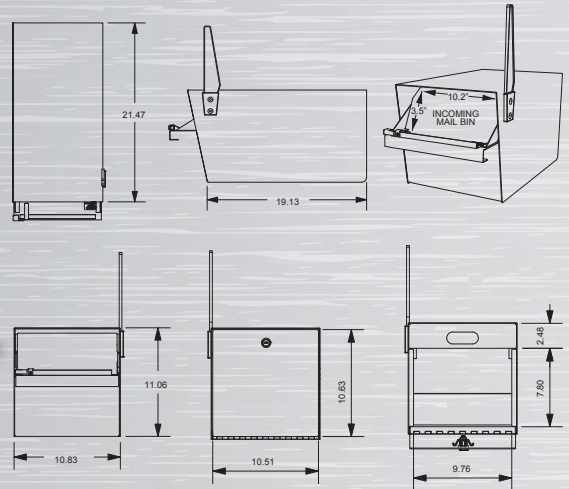
For more information about any of our products,
visit us at www.mailboss.com

Street Safe



BLACK
-7526

23 lbs



Safe, Secure and Versatile.
The Street Safe has a
rear locking access door
for mail retrieval.

This locking mailbox ensures user safety, ease of mind, and protection against mail theft. Constructed of galvanized steel, powder coated with a durable black finish, and featuring a high-security lock, the Street Safe is sure to provide years of reliable and safe use.



- + REAR locking access door for safe retrieval of mail and parcels away from street traffic
- + INNOVATIVE FRONT BAFFLE DOOR accepts mail bundles, small packages and deters phishing
- + PATENTED ANTI-PRY LATCH locking mechanism featuring a tool steel hook cam
- + LOCKING access door with commercial grade, high security 12 disc wafer lock
- + DURABLE 14 & 16- gauge galvanized steel and powder coat finish
- + Includes vandal resistant flag, 3 keys, floor liner & hardware for installation

Dimensions: 21"D x 11.25"H x 10.75"

**Wholesale
COST:**

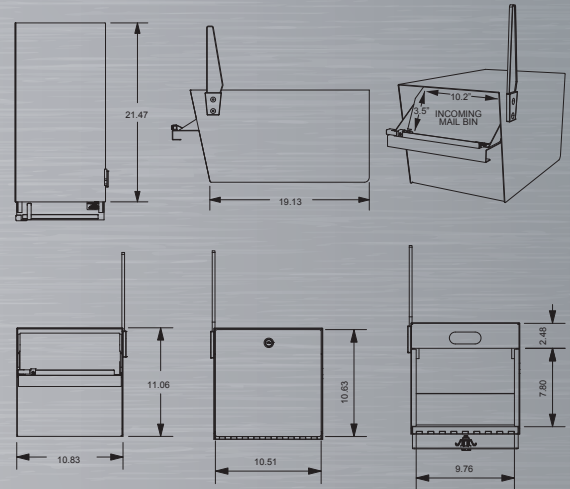
For more information about any of our products,
visit us at www.mailboss.com

Street Safe - Latitude



BLACK
-7536

23 lbs



Safe, Secure and Versatile.
The Street Safe Latitude
has front & rear locking
access doors for
mail retrieval.

This locking mailbox ensures user safety, ease of mind, and protection against mail theft. Constructed of galvanized steel, powder coated with a durable black finish, and featuring two high-security locks, the Street Safe Latitude is sure to provide years of reliable and safe use.



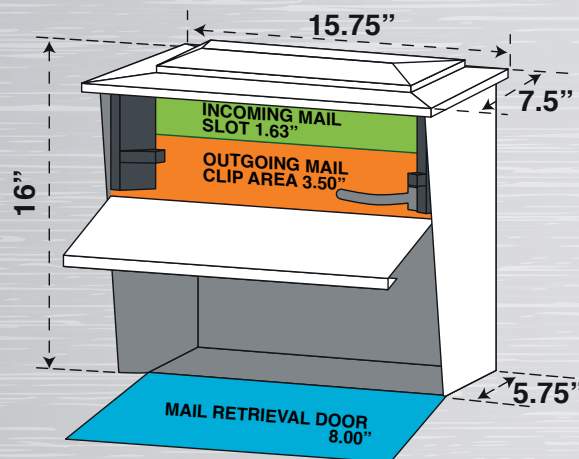
- + FRONT AND REAR locking access doors for safe retrieval of mail and parcels away from street traffic
- + INNOVATIVE FRONT BAFFLE DOOR accepts mail bundles, small packages and deters phishing
- + PATENTED ANTI-PRY LATCH locking mechanism featuring a tool steel hook cam
- + LOCKING access door with commercial grade, high security 12 disc wafer lock
- + DURABLE 14 & 16- gauge galvanized steel and powder coat finish
- + Includes vandal resistant flag, 3 keys, floor liner & hardware for installation

Dimensions: 21"D x 11.25"H x 10.75"

**Wholesale
COST:**

For more information about any of our products,
visit us at www.mailboss.com

Townhouse



The Townhouse Mail Boss is a high security locking wall-mount mailbox that will keep your mail secure without compromising style.

The classic Townhouse locking mailbox is made of heavy-gauge galvanized steel and features a patented anti-pry latch and a professional grade 12-disc wafer lock for maximum security, so you can safely and conveniently receive your sensitive mail at your doorstep. Durable powder-coated finish available in black, bronze, white or granite.



- + 14- and 16-gauge welded electro-galvanized steel
- + Stainless steel hinges for lasting use
- + Innovative patented anti-pry latch locking mechanism to prevent leveraged entry
- + Locking access door with commercial grade high security wafer lock
- + Innovative features for quick and easy installation on most any surface
- + Includes adhesive flag, 3 keys, reflective house numbers & installation hardware

Dimensions: 15.75" W x 16" H x 7.5" D

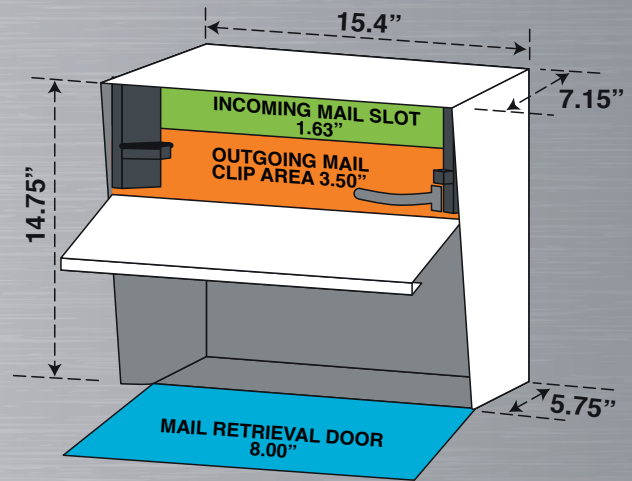
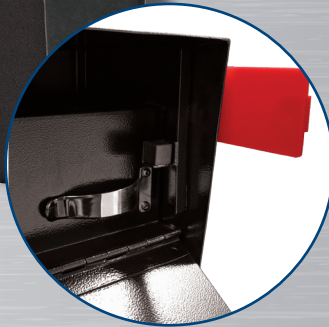
**Wholesale
COST:**

For more information about any of our products,
visit us at www.mailboss.com

Metro



22 lbs



The Metro Mail Boss high security locking wall-mount mailbox delivers real security with contemporary appeal.

The modern Metro is made of heavy-gauge galvanized steel and features a patented anti-pry latch and a professional grade 12-wafer disc lock for maximum security, so you can safely and conveniently receive your sensitive mail at your doorstep. Durable powder-coated finish available in black, bronze, white or granite.



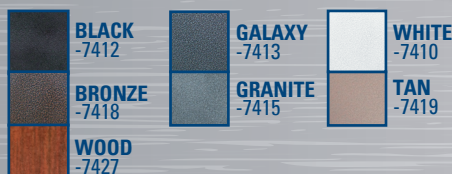
- + 14- and 16-gauge welded electro-galvanized steel
- + Stainless steel hinges for lasting use
- + Innovative patented anti-pry latch locking mechanism to prevent leveraged entry
- + Locking access door with commercial grade high security wafer lock
- + Innovative features for quick and easy installation on most any surface
- + Includes adhesive flag, 3 keys, reflective house numbers & installation hardware

Dimensions: 15.4" W x 14.75" H x 7.15" D

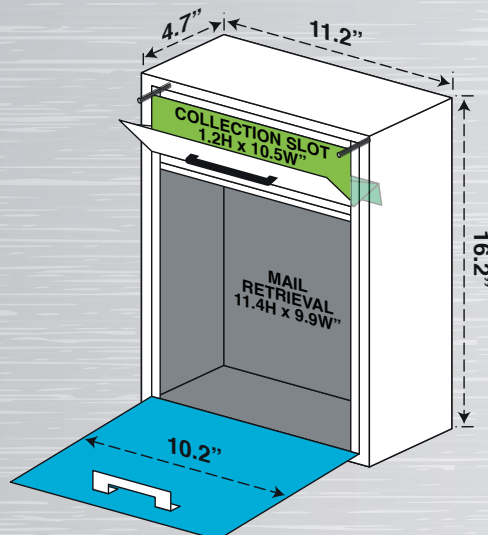
**Wholesale
COST:**

For more information about any of our products,
visit us at www.mailboss.com

Dropbox



13 lbs



The Locking Security Drop Box is a high-security collection box designed for a variety of commercial, residential or business purposes.

This drop box can be used for standard mail, or more frequently, for applications such as key drops, rent payments, interoffice deliveries, and more. The locking security dropbox is made of 16-gauge galvanized steel and features a commercial grade 12-disc wafer lock. The durable powder-coated finish is available in tan, bronze, granite, white, black, wood grain and galaxy.



+ Designed to secure incoming mail, interoffice mail, money, checks, keys, ballots, and more

+ Ideal for schools, private postal centers, corporate mail centers, restaurants, key drops, rental facilities, military bases, manufacturing plants and many more commercial uses

+ Durable 16-gauge galvanized steel construction
Innovative incoming delivery bin to help prevent fishing

+ Quick and easy installation on most any surface
Stainless steel piano hinges for durability, longevity and ease of use

Dimensions: 16.2" H x 11.2" W x 4.7" D

**Wholesale
COST:**

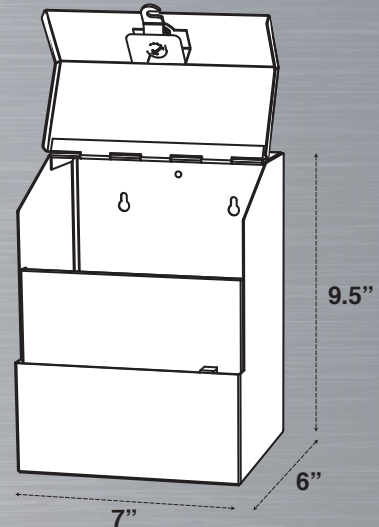
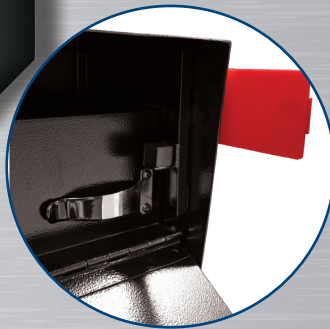
For more information about any of our products,
visit us at www.mailboss.com

Comment Box



BLACK
-8100

4 lbs



Designed with your security at the forefront. You can rest assured that the Comment Boss will safeguard your items until you are ready to retrieve them.

The patented Anti-Pry latch locking system is the same design from our Mail Boss locking security mailboxes. With versatility in mind, we made the opening slot 4.7" x 0.23" with a 1" diameter opening in the center in order to accept a variety of items to include car keys and bundles. Whatever your imagination requires, the Comment Boss is ready to meet your needs.



+ MULTIPLE USES. Comments, ballot voting, suggestions, tips, keys, room cards, donations, you name it!

+ INSTALLS ANYWHERE. On the counter, on the desk, on the wall, Comment Boss can also be permanently mounted to flat surfaces and walls with the included hardware.

+ ANTI-PRY LATCH LOCK. Features the patented Mail Boss Anti-Pry Latch Locking system for top of the line safety and security

+ INCLUDED ACCESSORIES. Two keys, mounting hardware, comment/suggestion cards, sticker labels, and installation instructions.

Dimensions: 7" W x 9.5" H x 6" D

**Wholesale
COST:**

For more information about any of our products, visit us at www.mailboss.com

Accessories:

SURFACE MOUNT POST

Designed to mount securely on a sidewalk or curb that stands 4"-8" above the road surface.

WHITE-7128-7157
BLACK-7127-7155
GRANITE-7126-7156
BRONZE-7129-7158

**Wholesale
COST:**

IN-GROUND POST

This post will fit securely over a treated wooden 4"x4" post for deep installations and reinforcement with rebar stakes.

WHITE-7122
BLACK-7121
GRANITE-7120
BRONZE-7123

**Wholesale
COST:**



CURBSIDE MAILBOX SPREADER BARS

Spreader Bars allow you to mount up four curbside mailboxes on one post.

2 BOX

WHITE-7146
BLACK-7144
GRANITE-7145
BRONZE-7147

**Wholesale
COST:**

4 BOX

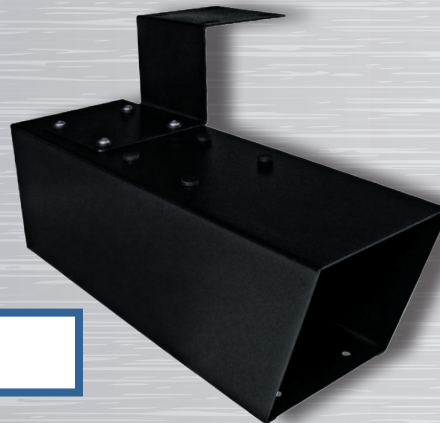
WHITE-7136
BLACK-7134
GRANITE-7135
BRONZE-7137

**Wholesale
COST:**

3 BOX

WHITE-7142
BLACK-7140
GRANITE-7141
BRONZE-7143

**Wholesale
COST:**



NEWSPAPER HOLDER

The Mail Boss Newspaper Holders conveniently and easily attach to any curbside Mail Boss mailbox with an innovative mounting bracket.

WHITE-7113
BLACK-7111
GRANITE-7112
BRONZE-7114

**Wholesale
COST:**



HASP LOCK

Turn knobs are ideal for users who want to use their own padlocks, the turn knobs have a smooth easy-grip knob that is easy to turn and can attach a padlock.

MAIL BOSS OR WALL MOUNT -7561
MAIL MANAGER OR PACKAGE MASTER -7560

**Wholesale
COST:**



For more information about any of our products, visit us at www.mailboss.com

POP Merchandising:

- + DISPLAY
- + END CAP
- + PACKAGING
- + BANNERS
- + BROCHURES
- + VIDEO PLAYER



Mail Boss has been honored to receive multiple awards for our quality and innovation in packaging and merchandising:



IN STORE DISPLAY



For more information about any of our products, visit us at www.mailboss.com

EPOCH DESIGN, LLC

**MAIL BOSS**

LOCKING SECURITY MAILBOXES

DROP SHIP ORDER FORM

PLEASE FAX YOUR ORDER TO (425) 284-0885
OR EMAIL TO orders@mailboss.com

BILL TO:

PO #:

Mail Boss Locking Security Mailboxes

Description	Color	Model / UPC
Mail Boss Mail Manager Mailbox Curbside	Black	7506 660753750609
	Bronze	7508 660753750807
	White	7507 660753750708
	Granite	7505 660753750504

Description	Color	Model / UPC	Qty
Mail Boss Mail Manager (PRO)	Black	7500 660753750005	

Description	Color	Model / UPC	Qty
Mail Boss Mailbox Curbside	Black	7106 660753710603	
	Bronze	7108 660753710801	
	Granite	7105 660753710504	
	White	7107 660753710702	

Description	Color	Model / UPC	Qty
Mail Boss Package Master Mailbox Curbside	Black	7206 660753720602	
	Bronze	7208 660753720800	
	Granite	7205 660753720503	
	White	7207 660753720701	

Description	Color	Model / UPC	Qty
Townhouse Locking Mailbox Wall Mount	Black	7172 660753717206	
	Bronze	7174 660753717404	
	Galaxy	7175 660753717503	
	Granite	7171 660753717107	
	White	7173 660753717305	

Description	Color	Model / UPC	Qty
Metro Locking Mailbox Wall Mount	Black	7162 660753716209	
	Bronze	7164 660753716407	
	Galaxy	7160 660753716001	
	Granite	7161 660753716100	
	White	7163 660753716308	

Description	Color	Model / UPC	Qty
Locking Dropbox Wall Mount	Black	7412 660753741201	
	Bronze	7418 660753741805	
	Granite	7415 660753741508	
	Galaxy	7413 660753741300	
	Tan	7419 660753741904	
	White	7410 660753741003	

SHIP TO:

Store #:

Mail Boss Posts

Description	Color	Model / UPC	Qty
In Ground Post	Black	7121 660753712102	
	Bronze	7123 660753712300	
	Granite	7120 660753712003	
	White	7122 660753712201	

Description	Color	Model / UPC	Qty
Surface Mount Post Package Post & Base Plate	Black	7127 / 7155 660753712706 / 660753715509	
	Bronze	7129 / 7158 660753712904 / 660753715806	
	Granite	7126 / 7156 660753712607 / 660753715608	
	White	7128 / 7157 660753712805 / 660753715707	

Mail Boss Spreader Bars

Description	Color	Model / UPC	Qty
2 Box Spreader Bar	Black	7144 660753714403	
	Bronze	7147 660753714700	
	Granite	7145 660753714502	
	White	7146 660753714601	

Description	Color	Model / UPC	Qty
3 Box Spreader Bar	Black	7140 660753714007	
	Bronze	7143 660753714304	
	Granite	7141 660753714106	
	White	7142 660753714205	

Description	Color	Model / UPC	Qty
4 Box Spreader Bar	Black	7134 660753713406	
	Bronze	7137 660753713703	
	Granite	7135 660753713505	
	White	7136 660753713604	

Mail Boss Newspaper Holder

Description	Color	Model / UPC	Qty
Mail Boss Newspaper Holder	Black	7111 660753711105	
	Bronze	7114 660753711402	
	Granite	7112 660753711204	
	White	7113 660753711303	

Gondola/Shelf Bracket

Description	Color	Model / UPC	Qty
Gondola/Shelf Bracket	Black	7248 (48") 660753724808	
	Black	7236 (36") 660753723603	

**USE THIS FORM
AS YOUR HARD COPY**